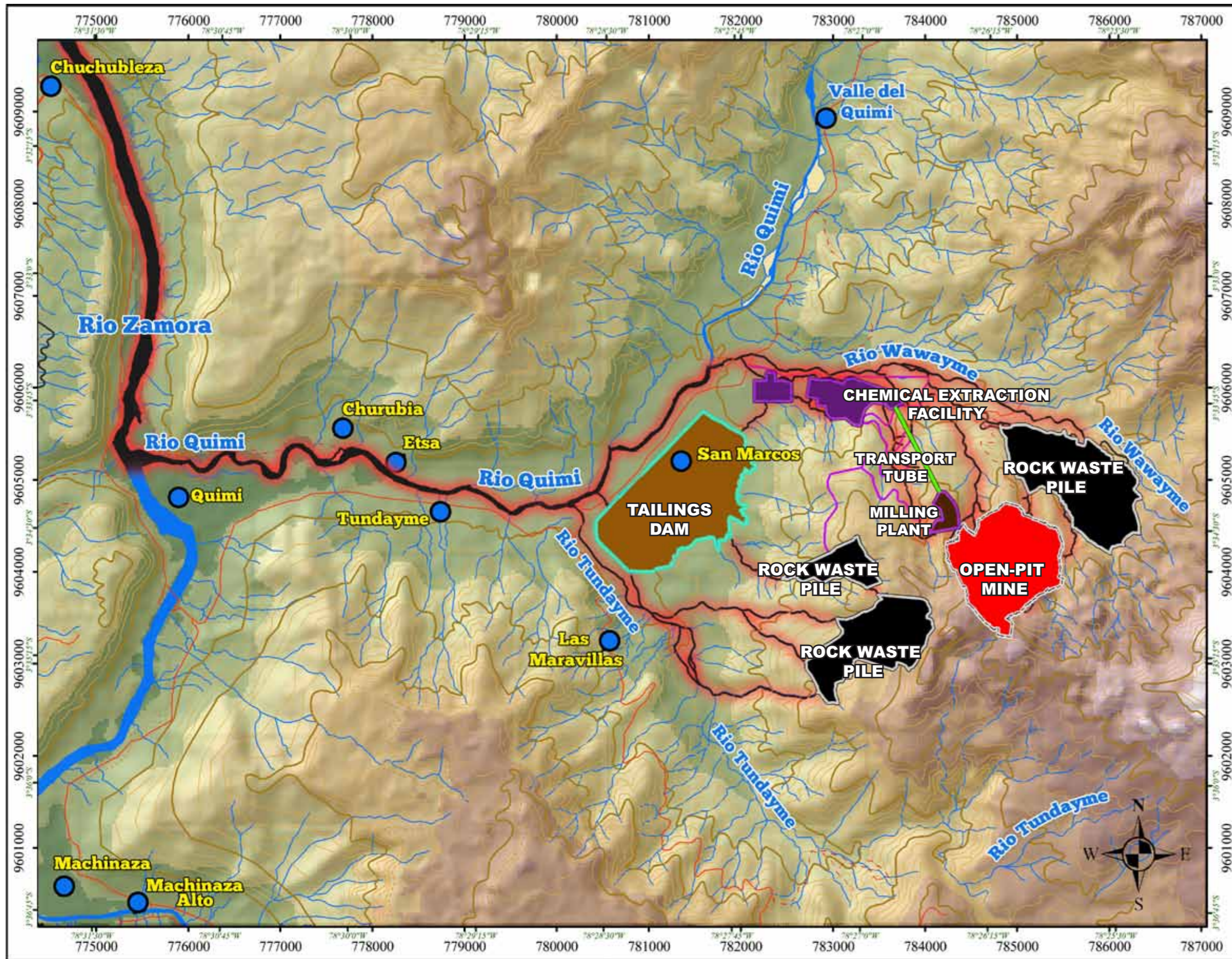





# PROJECTED POISONING OF RIVERS - UPPER AMAZON BASIN - MIRADOR OPEN-PIT COPPER MINE - ECUADOR



## SYMBOLS

-  Populated centers
-  Water course
-  Contaminated water course

## LEGEND

-  **OPEN-PIT MINE**
  - 1.25 km deep
  - extraction of 60.000 tons of rock per day, the equivalent of 1.500 trucks per day
  - logging of trees and clear-cutting or burning of vegetation precedes the removal of the rock waste
-  **ROCK WASTE PILES**
  - deposits of materials not containing the target minerals (the first layer of soil)
  - contains acid-generating sulphides, heavy metals and other contaminants
-  **MILLING PLANT, TRANSPORT TUBE & CHEMICAL EXTRACTION FACILITY**
  - rocks containing the target minerals are crushed and transported through the tube to the chemical extraction facility
  - sulfuric acid (for copper) and cyanide (for gold and silver) are used to separate the minerals
-  **TAILINGS DAM**
  - mixture of water and the wastes remaining after the chemical extraction
  - contains acid-generating sulphides, heavy metals and other contaminants plus the chemicals used in the separation process

### CENTERS OF POPULATION AFFECTED BY THE CONTAMINATION:

Quimi, Machinaza, Machinaza Alto, San Marcos, Las Maravillas, Tundayme, Etsa, Churuvia, Valle del Quimi, Parroquia El Panguí, Certero, Chuchubleza, The Palmira, Paquinza, Panguí, San Andres, Santa Cruz, Santiago Pati, Remoligo 1 y 2

### WATER IS LIFE.

The River Tundayme is already toxic from the mining. There are no longer fish in the river and the contamination is causing sickness in the communities. When man mines the Earth and exposes sulphur bearing rocks to the Air and Water, dilute sulphuric acid drains from these rocks. When the rock is mined, the huge explosions release

sulphur dioxide into the Air. This poison contaminates the Air and this contamination is spread by the Wind. The acid in the Water kills fish life and leaches out heavy metals from the rocks such as lead, cadmium and arsenic. The Water becomes poisonous to all life forms. The "heavy metals" are absorbed by plants, animals and

humans and cause sickness and eventual death. Rocks exposed by mining produce acid for thousands of years. When the Mine is closed the pollution of water with acid and heavy metals continues, and has to be controlled in perpetuity. The Bureau of Land Management USA, say 500 years. The reality is "in perpetuity". This mine will destroy both Shuar lands, Shuar

culture, and the most bio-diverse area in all of Latin America. With this mine, the future for the Shuar in these mountains is ended, the sacred spaces and the water poisoned in perpetuity. Neither The Shuar, nor the Mestizos want this mine on their lands, and in their Assemblies they have declared that they will fight the mine, and the invasions of their land until their last breath.